

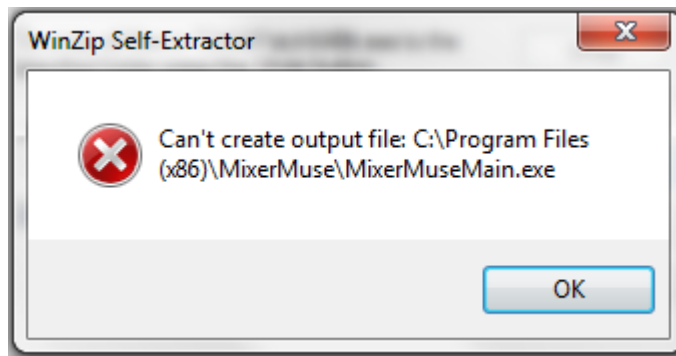
## How do I install T2488 on Windows 7 or Vista 64 bit?

To install T2488 on Windows 7 or Vista 64 bit:

- 1) Download and install the program normally.
- 2) At the end of the install uncheck the box to launch T2488. If you forget to do this, no problem, just wait for the error message to time out when the program starts.
- 3) Click on this link: <http://www.mixer muse.com/64BitPatch/T2488Patch64Bit.exe>
- 4) When the unzip program pops up click on "Unzip" (Note: If Windows is not installed on drive "C" change the drive letter to whatever drive letter it is installed on but leave the rest of the path the same). Close the unzip dialog.
- 5) At this point you can start T2488 normally from your desktop icon.

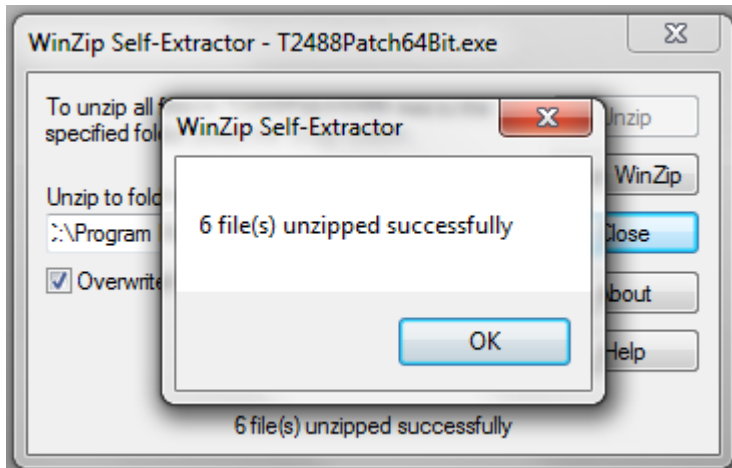
This patch will get incorporated into the new product releases (Version 2.0.0.0).

Note: If you see this error:



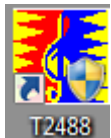
You do not have administrative privileges to overwrite the files in this directory. You can get around this by:

1. Make sure the user you are logged in as has administrative privileges.
2. Right click on this file T2488Patch64Bit.exe in this directory: <http://www.mixer muse.com/64BitPatch/>
3. Select "Save target as..." and select a directory on your local hard drive to save the file to.
4. In Windows Explorer right click on the file and select "Run as administrator"
5. You should be able to unzip the files now. You will see this message:

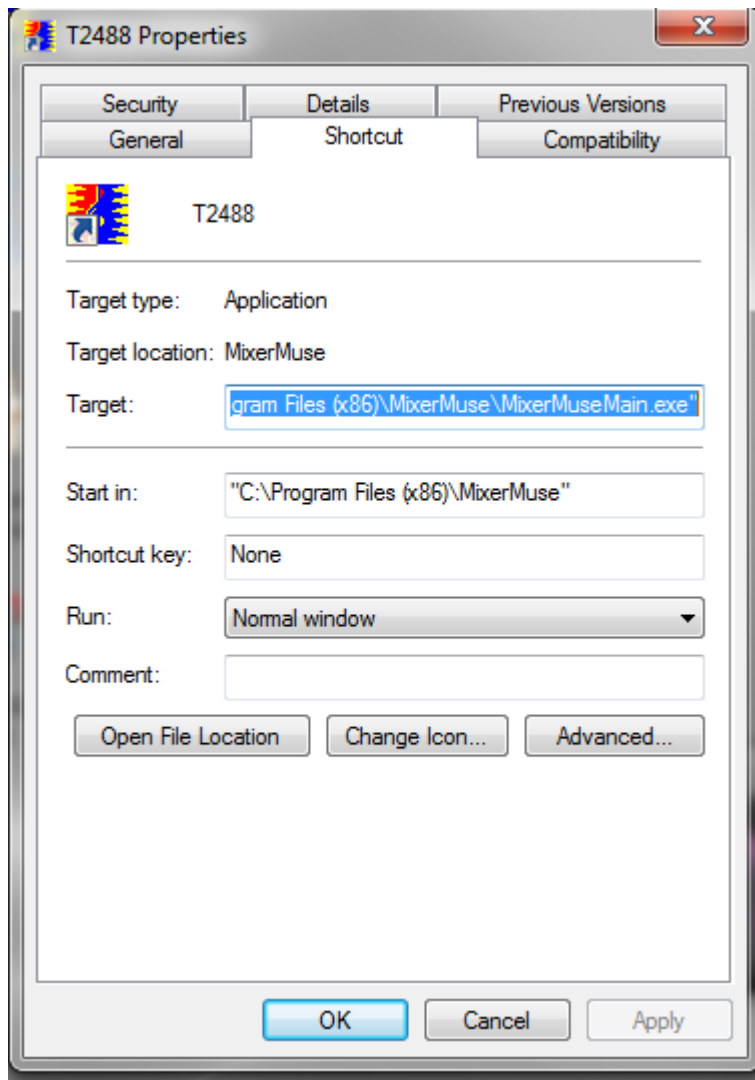


Additionally, we have seen some issues with the T2488 desktop icon that gets placed on the desktop for Windows 7 and Vista 64 bit. To fix this problem do the following:

1. Right click on this desktop item:



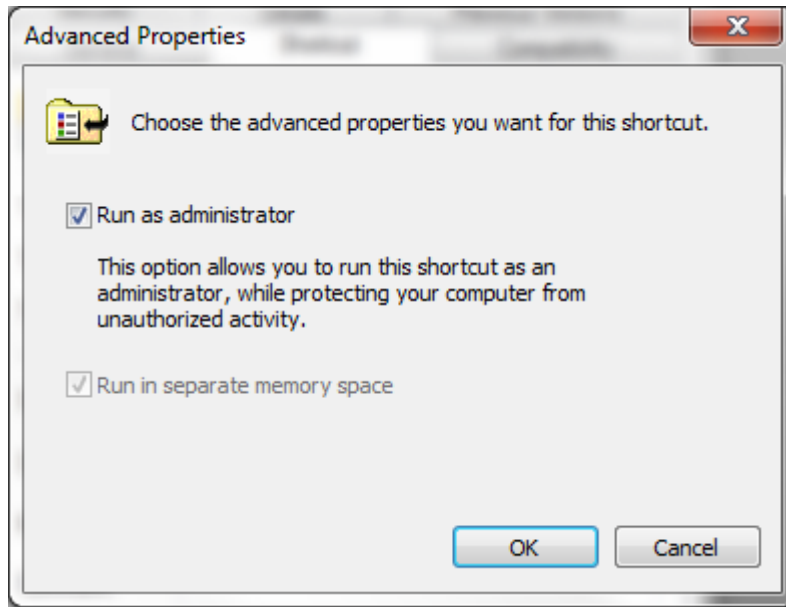
2. Make sure the initial screen displays this:



We have seen some installations with a blank in the "Start in:" directory. You can copy this text into the "Start in:" directory (do not forget the quotes):

"C:\Program Files (x86)\MixerMuse"

3. Click on the "Advanced..." button. Please make sure the "Run as administrator" checkbox is checked.



4. Click on "OK" both times to exit these dialogs.

This setup will now allow you to run T2488 without having to do anything else each time you use the program other than clicking on the T2488 icon.

These issues will be fixed in the new upgrade of the product, 2.0.0.0. This will be a free upgrade to current customers. Please do not hesitate to contact customer support at [support@mixermuse.com](mailto:support@mixermuse.com) if you need any assistance. We are happy to help!